



*“Trade show **tested**, for perfect set-up...time after time.”*

DISPLAYONE®

Engineered for Durability

DisplayONE®

The versatile, connectable & adjustable display system.

Messenger • X

The simple & affordable single display solution.

Messenger • RTR

The easy & portable retractable display stand.

From a single graphic stand to multi-booth presentations.....

In just a matter of minutes, you can create a wonderful first impression or a lasting positive impact with one effective presentation. In an office lobby, a hotel meeting room or an important trade show, DisplayONE turns any setting into the perfect backdrop for telling your story, showing your work or selling a product.

Along with value, we know you need flexibility to give your presentation imagination and personality. That's why DisplayONE offers more options. By using both front and back, you'll have twice the potential for visibility.

Each unit is adaptable enough to become anything from a plain tabletop exhibit to an elaborate trade show presentation utilizing single, 10' wide panels. They're easily assembled and conveniently carried over the shoulder.



Connect as many panels as you need. Stretch them out for a perfect backdrop. Zigzag them to create a partition or give excitement to your space. You might even make a stair-step with panels of different heights, adding variety and special impact. DisplayONE multiple units allow you to create and alter your presentations to fit any occasion.

DisplayONE uses parts that are lightweight, connectable and interchangeable to form a wide selection of display units and arrangements. The core unit is a basic single frame with two feet, two uprights, two horizontal ring bars and two locking helix bolts. Multipanel displays are made by simply adding partial frames - called connector units - to the core unit. The interlocking design lets you build any exhibit you need with ease. The real simplicity of adjustment comes from DisplayONE's locking systems. The DownStop™ lock lets the telescoping tube stay at a desired height when released and adjusts to heights from 53" to 94".



For extra appeal, DisplayONE offers several ways to enhance your exhibit. There are halogen lights to give your display clarity and warmth, literature holders that allow you to offer your audience pamphlets or other information and a wide selection of Velcro® compatible fabrics to provide some extra versatility when arranging your presentation. A variety of other options, such as presentation podiums, carrying and shipping cases and panel clips help you further customize your presentation.

For a single, more affordable stand, DisplayONE offers the Messenger-X which offers simplicity, versatility and quick, easy assembly. It's compatible with most types of graphics and comes in stock sizes from 20" to 46" wide and up to 94" tall. The Messenger-X requires less effort to change because of the lightweight, aluminum DownStop™ telescoping uprights and patented GrooveGrip™ crossbars. Perfect anywhere indoor pedestrian level signage is used, the Messenger-X will get you all the attention you need.

DisplayONE is now proud to feature Retractor Banner Stands. The Premium Retractor with adjustable tension is ultra sturdy because of its two fold-out support bars that come in complete contact with the floor. The banner pulls out and retracts smoothly and the telescoping pole adjusts the graphic to the precise height. Looks great as a tabletop display too!



Adding Velcro side panels creates instant versatility for your booth, allowing unlimited customization for any need.

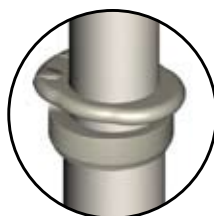
Simple, versatile DisplayONE components make the difference.



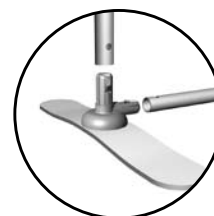
DisplayONE Ring Bars and locking helix bolts allow connection of multiple units for larger displays.



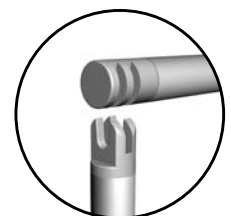
Arched, powder coated aluminum feet with locking helix stud for connectivity and easy of assembly.



Telescoping aluminum uprights with DownStop lock to adjust height from 53" to 94"



The Messenger-X "Express Connect" snap and lock foot system makes for quick and easy set-up.



*The Messenger-X GrooveGrip™ crossbar makes assembly easy (does **not** connect with additional units).*

DISPLAYONE®

Expandable Exhibit System



The DisplayONE Exhibit System is a compact, lightweight system that assembles in minutes without tools. Based on a single panel core unit this expandable, telescoping system can be customized for any situation. The exhibit system is ideal for roll-up digital banners, screen printed images, Velcro® compatible fabrics and rigid boards. Height is infinitely variable from 53" to 94" and several stock widths are available from 20" to 120" per panel.

- **TOOL-FREE ASSEMBLY**
- **BLACK OR SILVER FINISH**
- **TWO-SIDED**
- **LIGHTWEIGHT**
- **PORTABLE**
- **VERSATILE**
- **CONNECTABLE**
- **ADJUSTABLE**
- **INTERCHANGEABLE**

DISPLAYONE® Messenger·X

Single Display Solution



An affordable graphics stand offering simplicity, versatility and quick assembly. Now available in Black and Silver finishes, it's compatible with most types of graphics. Messenger-X is available in five stock widths from 20" - 46" wide, telescoping from 60" to 94" high. The GrooveGrip™ crossbar and "Express Connect" snap-and-lock foot connection make assembly a breeze. With a minimal number of parts and a minimal price, Messenger-X is ideal for single panel two-sided graphic presentations.

- **QUICK ASSEMBLY**
- **GROOVEGRIP™ CROSSBAR**
- **EXPRESS CONNECT SNAP 'N' LOCK FOOT CONNECTION**
- **PORTABLE**
- **SIMPLE**
- **PRACTICAL**
- **AFFORDABLE**
- **BLACK OR SILVER FINISH**

DISPLAYONE® Messenger·RTR

Retractable Banner Stand



The Premium 3386 Retractor with adjustable tension is extra sturdy due to its wide footprint. With the addition of a telescoping pole, the Premium 3386 can easily do the job of a tabletop display or a stand alone floor unit. Put multiple units next to each other for a tradeshow display that can easily be set up or taken down, thanks to the retractable graphics. With the options of the Presenter or the AD-Vantage, Messenger-RTR has the ability to meet your every need.

- **SILVER FINISH**
- **QUICK & EASY SETUP**
- **PORTABLE**
- **ADJUSTABLE**

TRADESHOW PACKAGES

Each package has been carefully designed to fit the two most common show space dimensions: 8' or 10' booth space. DisplayONE's unique components can be connected to form larger or smaller displays as space requirements change. Call today for a quote!



ACCESSORIES



Organizing Pouch



Rigid Shipping Cases w/ Wheels



Nylon Shipping Cases



Literature Holders



Grabber Bar (for shorter graphics)



Halogen Light

GRAPHICS

Digital Banners

Digital banners allow a nearly endless display of images on a wide variety of substrates such as fabric, vinyl and paper. Using pole pockets or one of our helpful attachment methods, banners can be quickly switched.



Screen Printed Banners

For extended outdoor or long term use, screen printed banners offer exceptional durability and a bold look. Our professional silk screening withstands extended outdoor use as well as the scrutiny of pedestrian level signage. Sewn pole pockets allow secure attachment without additional hardware.



Velcro® Compatible Fabrics

We offer a colorful array of hook and loop fabrics compatible with Velcro closures. This material allows you to frequently change your displays, attach small products or use our acrylic literature holders.



Rigid Panels

DisplayONE can also display your mounted posters and rigid signage with specialized clips for various thicknesses. Shown with the Grabber Bar for optional shorter banners or graphics.

EXTERIOR DISPLAY STANDS



Messenger PT

Messenger GMS

The **Bannerflex® Messenger® PT** (portable) and **GMS** (ground mounted) stands are designed to display banners in exterior locations at ground level and will endure normal wind pressures and other elements of nature. The Messenger PT has wind deflecting fiberglass upright supports and corrosion resistant components. The **Messenger® GMS** is 100% aluminum with a powder coat finish (custom colors available), and features a spring-loaded banner tension bar for easily changed graphics. The GMS is available in multiple widths from 16" to 24".

DISPLAYONE®
EXHIBIT SYSTEMS by Consort

2129 Portage Street | Kalamazoo, MI 49001
800.525.6424 269.388.4532 TF Fax: 888.880.6341
www.consort.com info@consort.com