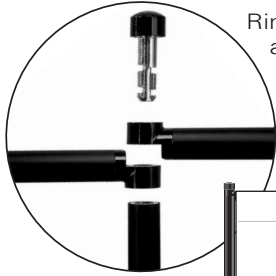


Features Comparison

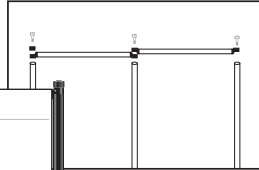
Get the right display stand for the right job.

DISPLAYONE[®] EXHIBIT SYSTEM

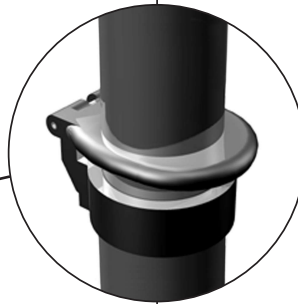
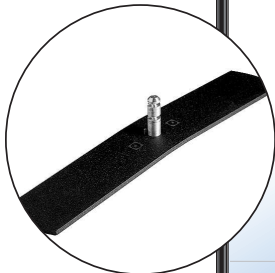
CORE UNIT



Ring Bars (or crossbars with rings) and Locking Helix bolts can connect with additional units.



Arched, powder coated aluminum foot. Bottom upright connection is helix stud with quick-connect sleeve.



Telescoping Aluminum uprights with DownStop lock to adjust height from 53" to 94".

Organizing pouch included.

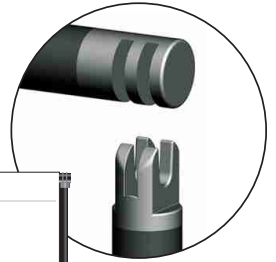


Our basic Core Unit is the starting point for many other configurations. This simple, one-panel display is available in varying widths from 20" to 120" and can be adjusted from 53" to 94" high. Panels and accessories can be swiftly assembled, changed, taken apart, and packaged for easy and convenient travel from one presentation to another.

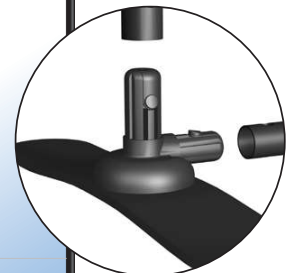
DISPLAYONE[®] Messenger•X

GRAPHICS STAND

Groove Grip™ crossbar makes assembly easy. (Does not connect with additional units)



NEW "Express Connect" Snap-and-Lock Foot System



The Display One Messenger•X is an affordable graphics stand offering simplicity, versatility, and quick assembly. It's compatible with most types of graphics and comes in 5 stock sizes from 20"-46" wide which can telescope from 53" to 94" high. The Messenger•X is easy to assemble because of the Groove Grip™ crossbar and Express Connect foot connection.

*Graphic not included

DISPLAYONE[®]
 CONSORT
 DISPLAY GROUP