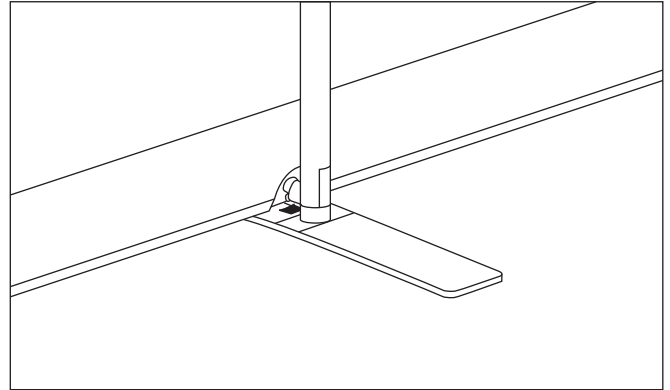
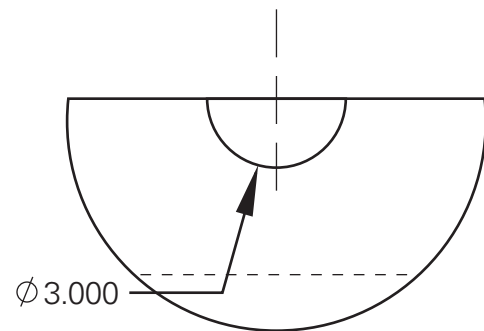
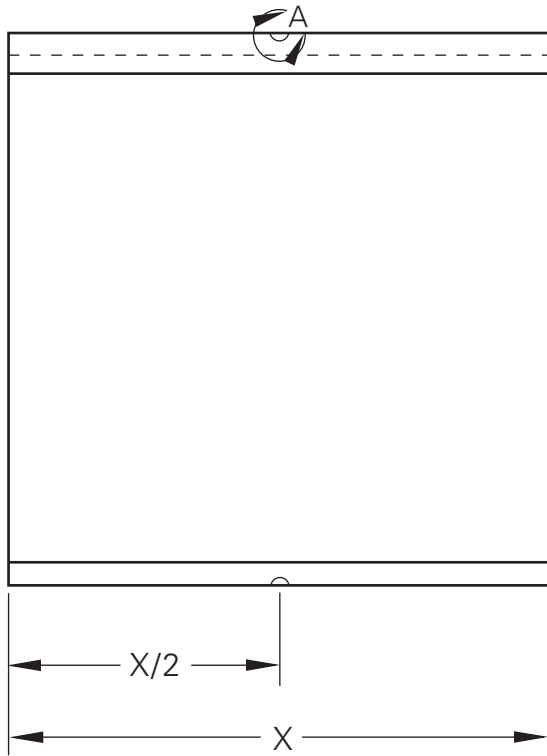


HALF-CIRCLE CUT-OUT GUIDELINES

Half-circle cut-outs are required on banner widths of 72" or greater. A cut-out allows an upright clamp to connect a horizontal bar to a middle upright (right).



Draw two 3" diameter half-circles (about the size of a soup can) on the back side of the banner. Locate each half-circle in the middle of both the top and bottom hems (below). Cut this half-circle out of the back side of the hem only, not completely through the banner.



DETAIL A
SCALE 1:4

DISPLAYONE®
CONSORT
DISPLAY GROUP

© 2003 Kalamazoo Banner Works
All Rights Reserved