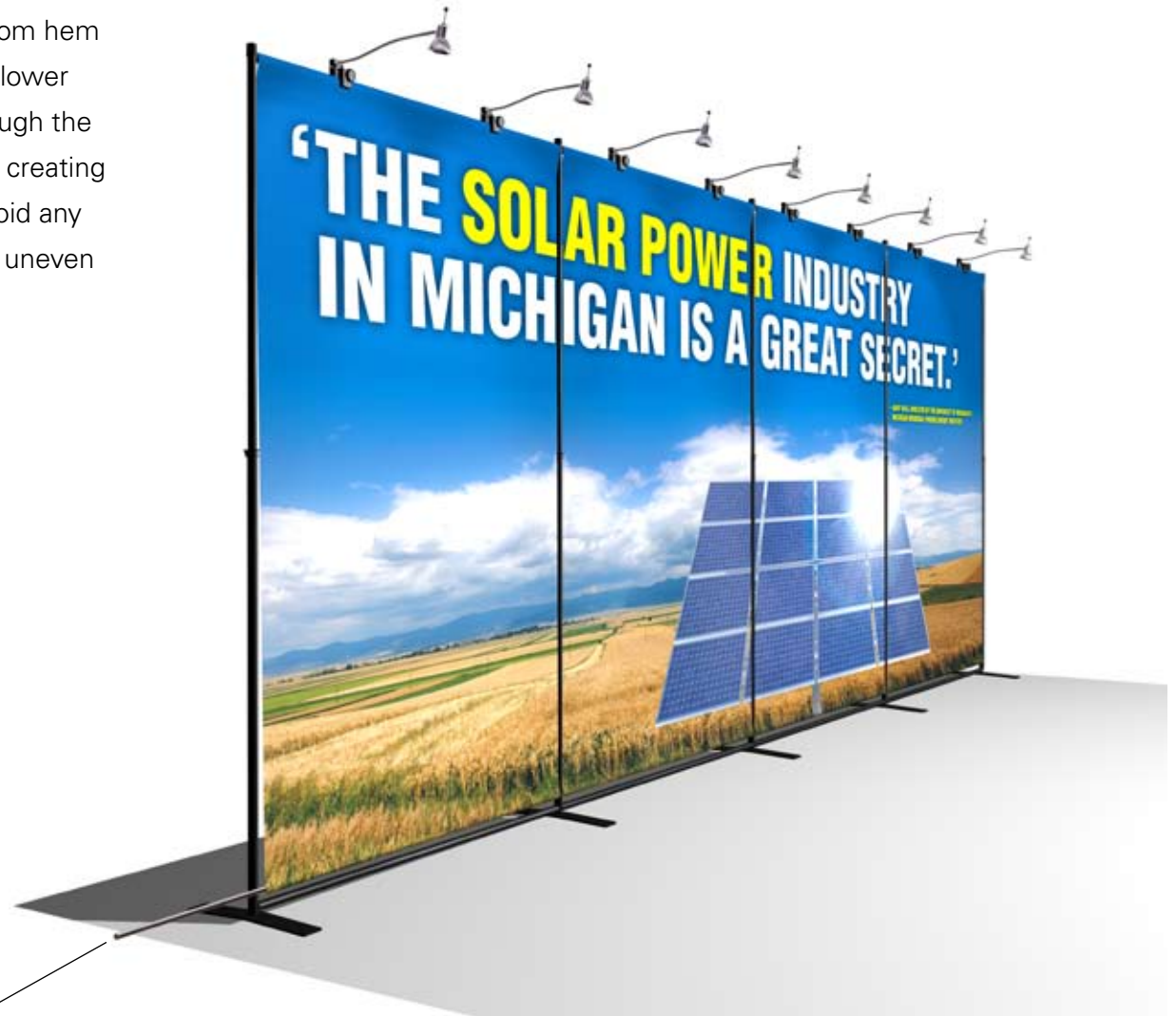


For best results when using 10 foot tall displays, the bottom hem of the banner should hang approximately 1/2" above the lower horizontal bar rather than the lower bar being placed through the hem. A metal rod should be placed into the bottom hem, creating enough weight to keep the banner stretched. This will avoid any potential "racking" or "twisting" which could result from uneven floors or banners of unequal length.

## helpful hints

- Assemble all side tubes before attaching top bar.
- Do not telescope tube(s) until all parts are in place.
- Make sure all helix bolts and all connections are tight when finished.
- Attach lights before raising the panels.
- If stand is twisted, reposition and retighten.
- If one person is assembling, "inch" each side up consecutively.



*1/2" conduit in each hem to be cut about 1" shorter than each banner width.*